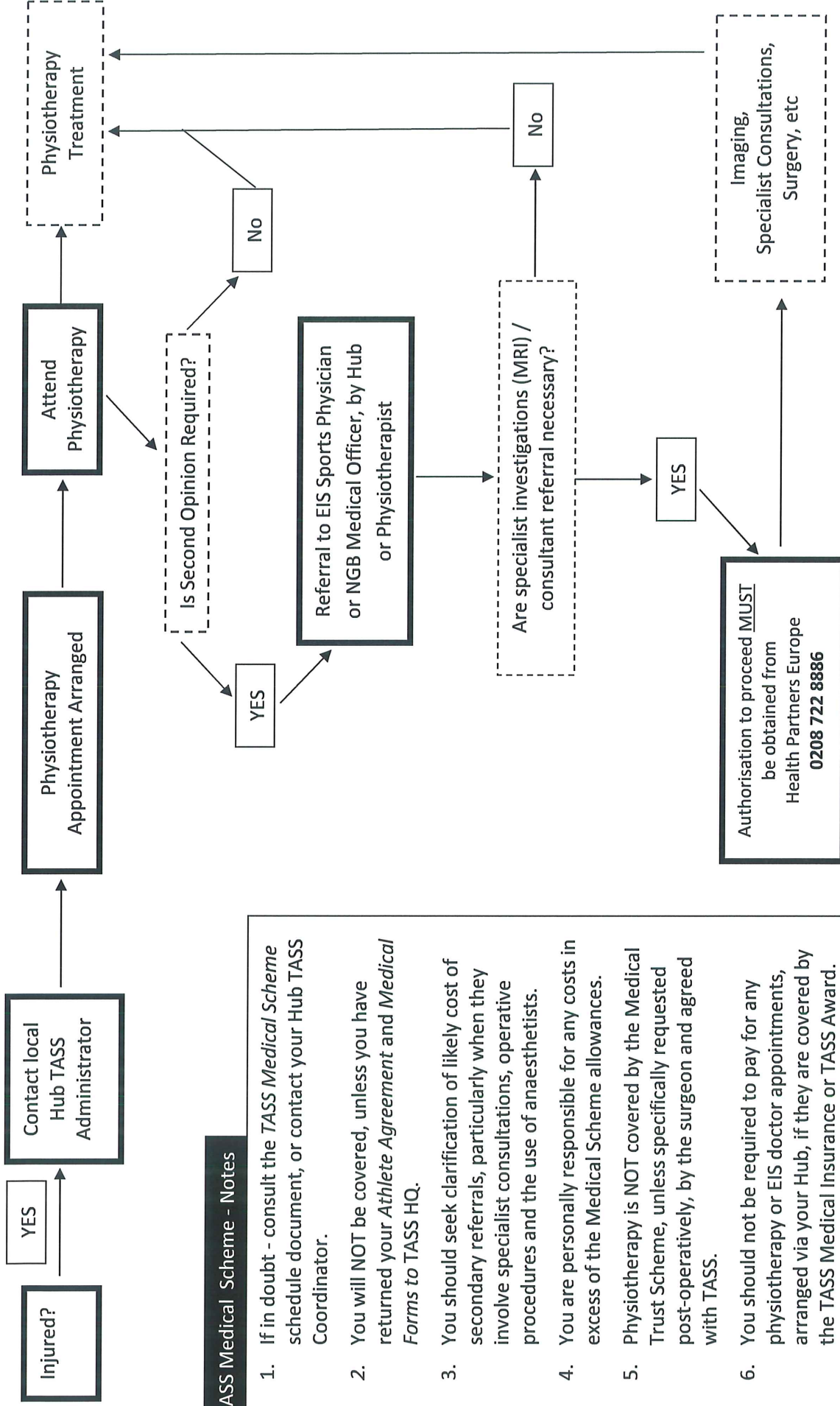


TASS Physiotherapy / Medical Route – Athletes.



TASS Medical Scheme - Notes

1. If in doubt - consult the TASS Medical Scheme schedule document, or contact your Hub TASS Coordinator.
2. You will NOT be covered, unless you have returned your *Athlete Agreement* and *Medical Forms* to TASS HQ.
3. You should seek clarification of likely cost of secondary referrals, particularly when they involve specialist consultations, operative procedures and the use of anaesthetists.
4. You are personally responsible for any costs in excess of the Medical Scheme allowances.
5. Physiotherapy is NOT covered by the Medical Trust Scheme, unless specifically requested post-operatively, by the surgeon and agreed with TASS.
6. You should not be required to pay for any physiotherapy or EIS doctor appointments, arranged via your Hub, if they are covered by the TASS Medical Insurance or TASS Award.

